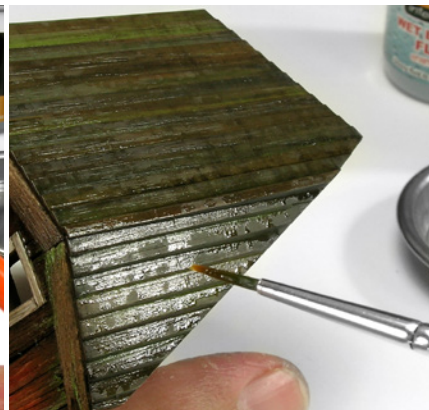
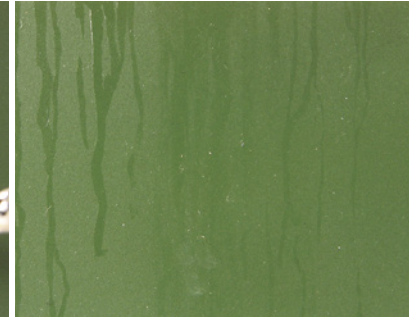
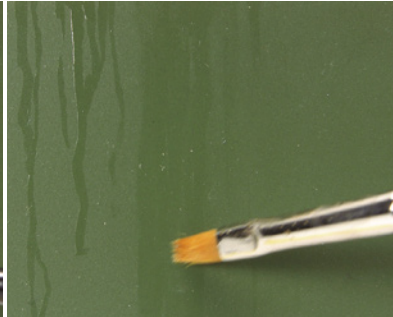




AK 079 WET EFFECTS FLUID

Rain, puddles, streaking water and lots of other similar effects can be attained using this excellent product. This product is the perfect solution to simulate various wet effects with great realism on any type of vehicle. This is not a shiny varnish, it has been specially designed for various wet effects offering different intensities to the brightness depending on the surface.



To create the effect of moisture on cold areas apply the product in the appropriate area and before drying with a clean brush soaked in AK011 White spirit, soften it to achieve the desired effect.

We can simulate small accumulations of water and puddles on the ground.



Other applications.



We can represent a multitude of stains, spills and moisture and different effects by applying the product directly from the jar or diluting it with AK011 White spirit in thin layers and successive applications, allowing to dry between them to better control the outcome.

